

Corporate Director of Adult Social Care
Jan Thurgood



- Director of Adult Social Care Services:**
- Information, advice and early intervention
 - Response and triage to contacts and referrals
 - Assessment and care management services
 - Adult safeguarding
 - Statutory mental health and mental capacity work
 - Council run direct care and support services
 - Integrated service delivery with health partners
 - Caldicott Guardian

- Director of Adult Social Care Commissioning:**
- Needs assessments, market analysis and development
 - Commissioning plans
 - Procurement and contract monitoring
 - Brokerage service
 - Development and impact monitoring of strategic and business plans
 - Workforce planning for ASC and sector
 - Performance management and quality assurance
 - IT developments for ASC and health
 - Integrated commissioning and improvement with health

- Director of Public Health:**
- Statutory public health responsibilities
 - Improving health and wellbeing

Corporate Director of Children's Services
Judith Ramsden

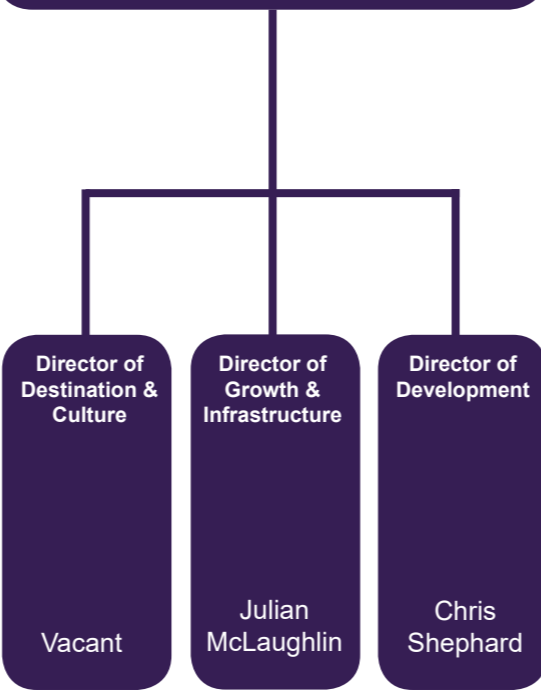


- Director of Children's Social Care Services:**
- Children in need and child protection services
 - Specialist family support services
 - Regional adoption agency
 - Fostering
 - Support for looked after children and care leavers
 - Children's residential and respite services
 - Multi-agency safeguarding hub
 - Safeguarding partnership
 - YOS
 - Asylum seeking services for children

- Director of Inclusion and Family Learning:**
- Early years
 - School standards partnership
 - 14 – 19 services
 - Specialist educational needs and disabilities
 - Integrated youth services
 - Early help
 - Virtual school
 - Fair access panel
 - Inclusion lead
 - School outreach and attendance

- Director of Quality & Commissioning:**
- Commissioning of Children's services (including performance and sufficiency)
 - Home to school transport
 - School place planning and school capital
 - School admissions
 - Children's Trust
 - Quality assurance (school partnership, social work and early help)
 - Partnerships (including LSCB)
 - Dedicated schools grant
 - Inspection planning
 - Systems and compliance
 - IRO, CP Chairs, LADO, ED Safeguarding
 - Complaints
 - ART

Corporate Director of Regeneration & Economy
Bill Cotton

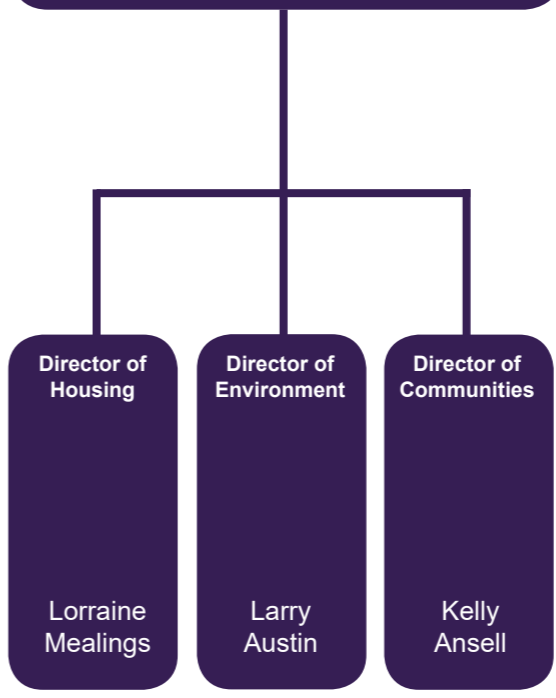


- Director of Destination and Culture:**
- Culture, arts, libraries and museums
 - Leisure provision and contract management
 - Destination management including seafront, tourism and events
 - Dorset adult learning service (pan Dorset)

- Director of Growth & Infrastructure:**
- Strategic planning
 - Highways network management
 - Engineering and coastal protection
 - Parking
 - Passenger transport
 - Building control
 - Planning services

- Director of Development:**
- Major capital projects
 - Economic development
 - Digital and smart cities
 - Town centre management
 - Estates and property
 - Town centre regeneration

Corporate Director of Environment & Community
Kate Ryan

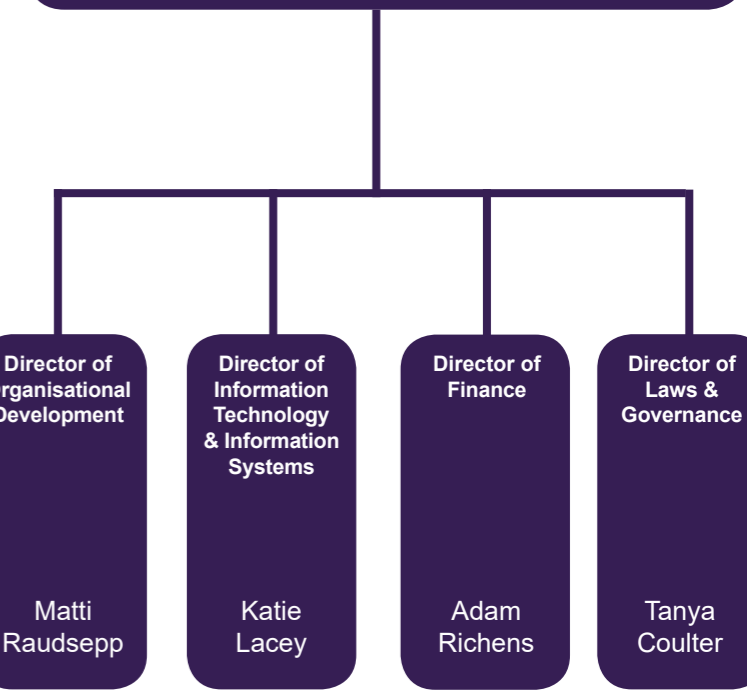


- Director of Housing:**
- Strategic housing development
 - Housing services
 - Homelessness
 - Housing asset management and construction
 - Commercial housing and construction companies
 - Facilities management

- Director of Environment:**
- Waste and cleaning
 - Fleet management
 - Green infrastructure development
 - Street scene services
 - Parks and open space management
 - Recreation and sports
 - Highway maintenance (delivery) and commercial service development
 - Bereavement services

- Director of Communities:**
- Regulatory services including environmental health, trading standards and licensing
 - Corporate health and safety
 - Community development and local regeneration
 - Targeted and community enforcements including private sector and housing
 - Community safety

Corporate Director of Resources
Julian Osgathorpe



- Director of Organisational Development:**
- HR
 - Customer services
 - Communications and marketing
 - Insights, policy and performance
 - Major change and PMO

- Director of Information Technology & Information Systems:**
- Service Delivery and support
 - ICT Infrastructure (Including WEB infrastructure)
 - Applications & Software Support
 - Network services – voice & data
 - Technical programme and project management
 - Application development and integration
 - Contracts & Compliance

- Director of Finance:**
- Finance
 - Audit and assurance
 - Procurement
 - Emergency planning
 - Revenues and benefits

- Director of Law & Governance:**
- Legal services
 - Democratic services
 - Member services
 - Elections
 - Registrars
 - Local land charges
 - Information governance